

COMPANY PROFILE



ABOUT US

We are a Qatar based EPCI Projects' support service provider.

Our expertise extends to Oil & Gas, Marine, Petrochemical, Power and Defense Industries worldwide.

We are unique in terms of product range, personalized services, quality and competitiveness.

PROFILE AND SERVICES

PROJECT MANAGEMENT CONSULTANCY

TECHNICAL BUILDING

SPECIALIZED OFFSHORE SERVICES

PROJECT PROCUREMENT CONSULTANCY

MANPOWER SUPPORT

EQUIPMENT AGENCY AND TRADING



CLIENTS



PROJECT MANAGEMENT CONSULTANCY

- Independent Design Review / Verification
- Be-spoke Project Management Service
- Project Audit
- Interface Management
- Project Progress Assessment and Certification
- Execution & Construction Strategy Development
- Feed and Execution Phase Constructability study
- Procedure Development
- Weight Control and Estimates
- Marine Operation
- Architectural Review
- Dispute Resolution and Cost Review

PROJECT PROCUREMENT AND SUPPLY CHAIN MANAGEMENT



Procure directly in support of your projects, returning value through a gain share approach.

With our international locations and the expertise of our supply chain professionals, we can provide excellent sourcing, expediting and logistics support to your projects worldwide. Where necessary, we also have strong relationships with third party agencies who we can engage to enhance our service on a case-by-case basis.

We work with local suppliers and develop local capabilities wherever possible, and all goods and services are procured in an ethical and cost-effective manner in an effort to support the in-country value (ICV) enhancement

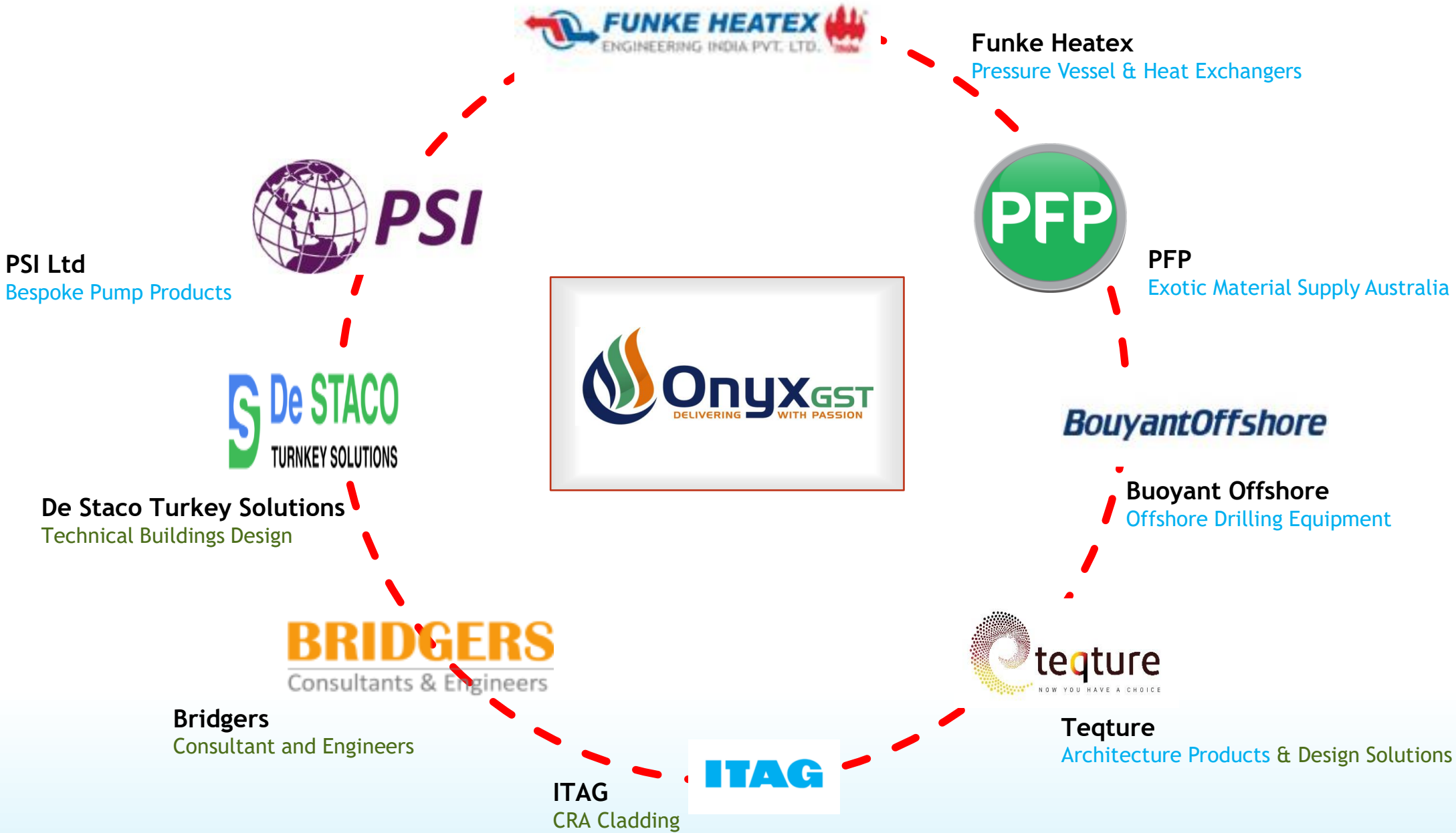
Project Expedition services

Vendor / Subcontracts Quote Verification

Procurement coordination for RSPL

Vendor Pre-Inspection Meetings (PIM) & Stage Inspections Up to FAT

Products & Service Partners



Heat Exchangers

Gasketed Plate Type Heat Exchanger



Shell & Tube/ Double Pipe heat Exchanger



Brazed Plate Heat Exchanger



Fully Welded Funke Bloc



36 Years of end-to-end engineering solutions

HEAT EXCHANGER MANUFACTURING

ASME “U”, “S”, “R” STAMP

IBR STAMP

ISO 9001,45001,14001

ENGG, SUPPORT FROM BASE TO
INSTALLATION

INDO GERMAN TECHNOLOGY

Product

Pressure Vessels/ Static Equipment



Storage Equipment-Tanks/ Silos



Fired Heater



Skid Packages



Boiler/ Thermic Fluid Heaters



DESIGN AND BUILT PUMPS

APPROVED IN QP VENDOR LIST

REFINERY, OFFSHORE, FPSO,
PETROCHEMICAL, GAS DEVELOPMENT

NUCLEAR, MOLTEN SULHUR, MOLTEN SALT
AND METAL, OIL WATER SEPARATION

BESPOKE PUMPS



OIL & GAS Application

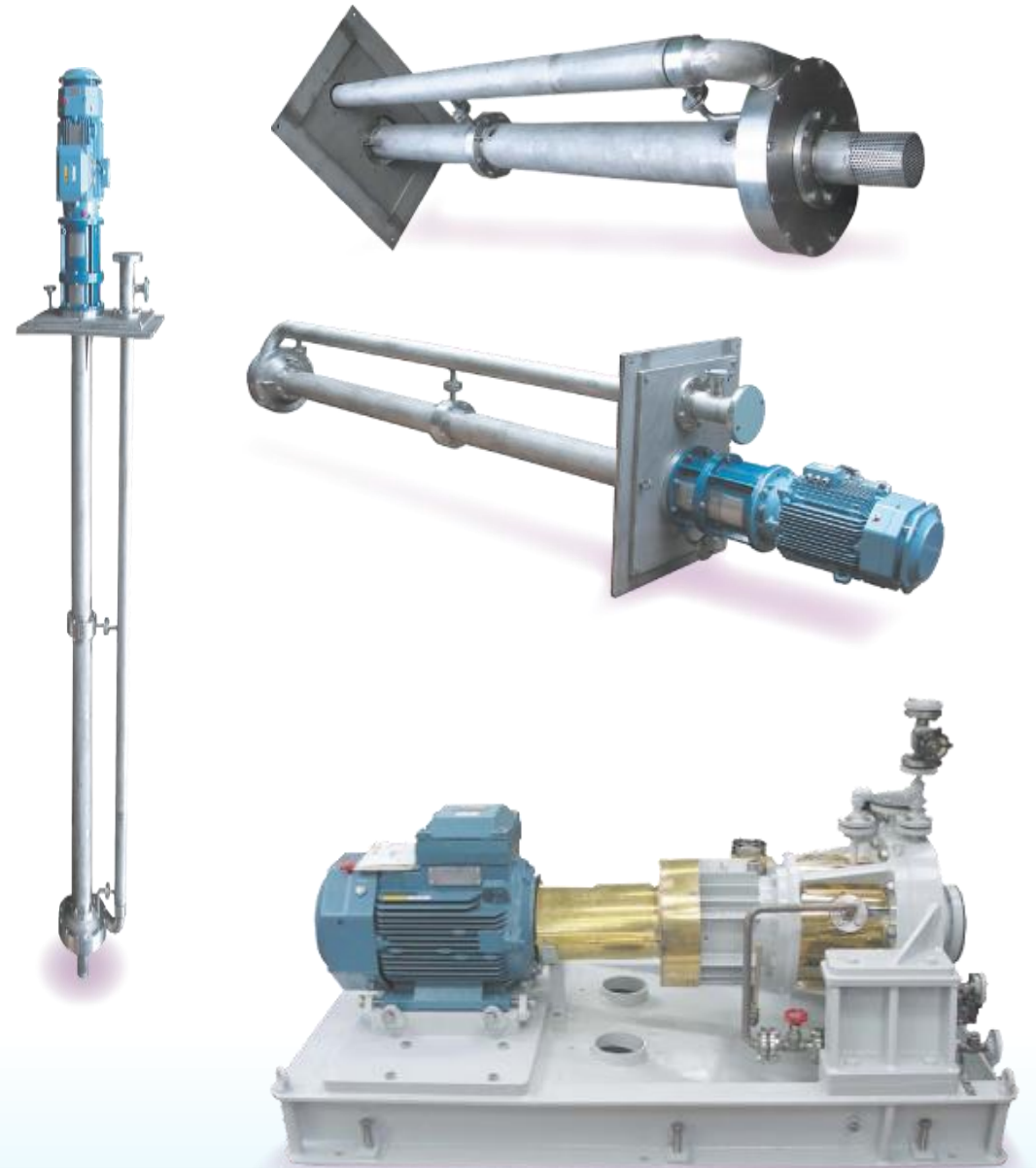
- API 610 STANDARDS BUILT PUMPS
- MOLTEN SULPHUR
- CLOSED AND OPEN DRAINS, DRUMS AND SUMPS.
- PROCESS CONDENSATE
- AMINE MIXING
- STABILISER REBOILER
- OILY WATER SEPARATION
- HYDROLYZER FEED
- HYDROCARBONS
- VAPOUR RECOVERY
- CONDENSED WATER INJECTION
- FOUL AND SOUR WATER SERVICE
- HYDROFINER / HYDROTREATER DRAINS
- ACID GAS K.O. DRUMS

HAZARDOUS CHEMICALS

- HYDROCHLORIC, SULPHURIC AND NITRIC ACIDS
- CAUSTIC SOLUTIONS
- MOLTEN SALTS AND METALS
- TITANIUM TETRACHLORIDE
- TITANIUM DIOXIDE
- PHOSPHORUS
- ELECTROZINC GALVANIZING
- PHTHALIC ANHYDRIDE
- URANIUM NITRILE
- NITROGLYCERINE IN NITRIC ACID
- AMMONIUM NITRATE
- POTTASIAM NITRATE
- WET PROCESS PHOSPHORIC ACID
- OLEUM
- STORM WATER / SLOPS / DRAINS

PRODUCT

- HORIZONTAL PUMP
- VERTICAL PUMP
- MOLTEN SUPLUR PUMP
- VORTEX -FLO PUMP
- PRODUCTION PROCESS



DESIGN AND ENGINEERING CONSULTANCY

OIL AND GAS (UPSTREAM, MID STREAM,
DOWN STREAM)

POWER AND INFRASTRUCTURE

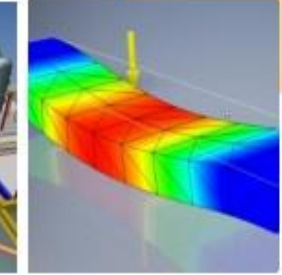
STUDIES & CONCEPT SCREENING

FRONT END ENGINEERING DESIGN

RESIDUAL ENGINEERING

PRE COMMISSIONING, COMMISSIONING AND
START UP SUPPORT

PROCESS SIMULATION



DEBOTTLENECKING STUDIES

PROCESS SIMULATION

RELIEF & FLARE SYSTEM


HVAC DESIGN

SUBSTATION DESING

GAP DISPERSION STUDY

CIVIL,STRUCTRUAL & ARCHITECTURE

PROJECT SOFTWARE



Process & Technical Safety	Piping, Pipelines, Mechanical & HVAC	Instrumentation, Telecom & Electrical	Civil and Structural	Project Management
<ul style="list-style-type: none"> • ASPEN HYSYS • ASPEN FLARE SYSTEM ANALYSER • PIPELINE STUDIO • PIPENET • PIPESIM • SP PID • PHAST • AUTOCAD • MICRO STATION 	<ul style="list-style-type: none"> • CEASAR II • MATHCAD • SP3D • PDMS • PDS • AUTOCAD • ARC GIS • PV ELITE • HAP • MICROSTATION • PIPE DATA PRO 	<ul style="list-style-type: none"> • INSTRUCAL • INTOOLS • ETAP • DIALUX • SP3D • SPI • SPEL • AUTOCAD • MICROSTATION 	<ul style="list-style-type: none"> • STAAD PRO • SACS • MAT 3D • FOUNDTATION 3D • SP3D • PDS • PDMS • AUTOCAD • MICROSTATION 	<ul style="list-style-type: none"> • PRIMAVERA • MICROSOFT PROJECT • SAP • MICROSOFT PACKAGE • INHOUSE TOOLS

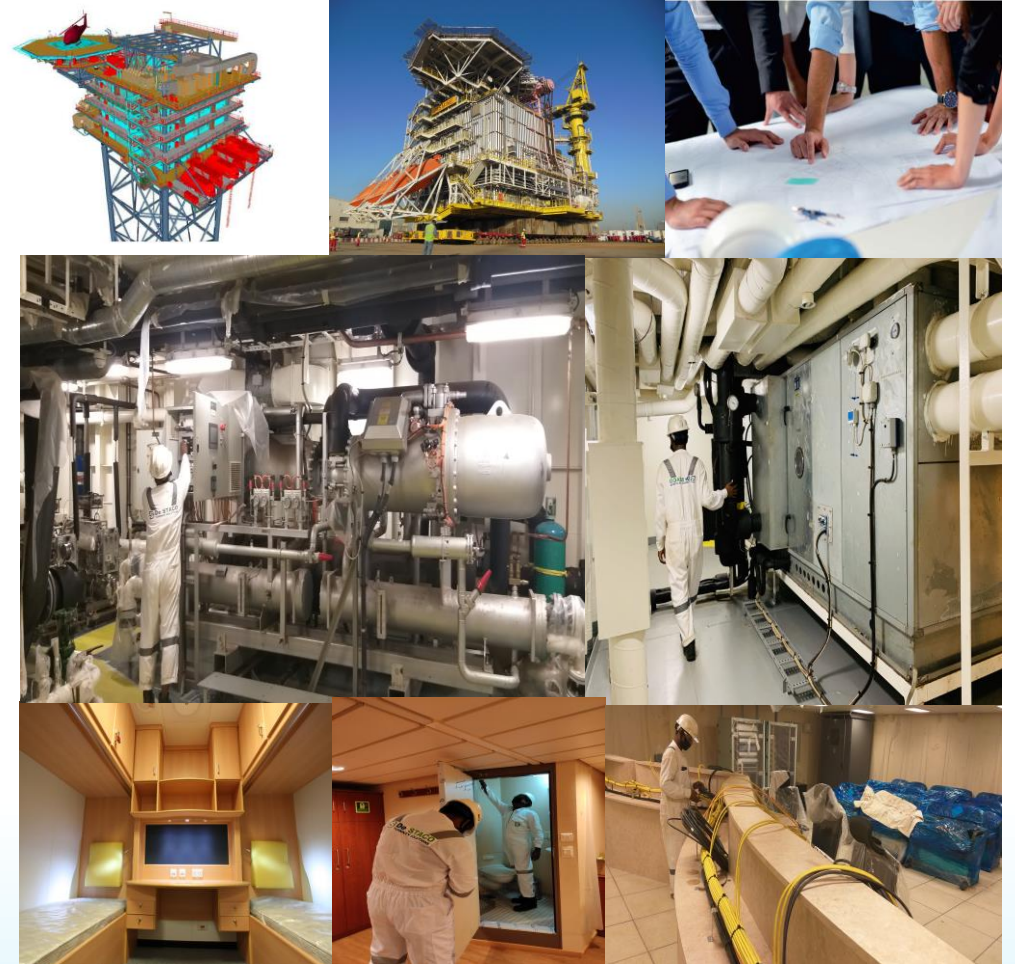
NEW BUILD, REPAIR, RETOFIT, TECHNICAL
BUILDING

ARCHITECTURAL DESIGN AND BUILT

HVAC, ELECTRICAL AND INSTRUMENTATION

SPECIALIZED MARINE AND OFFSHORE AND
ONSHORE CONSTRUCTION

PIPING AND PLUMBING



PROTECTIVE CLADDING

WELL HEAD XMAS TREE VALVE SEAT, BALL,
RINGS ETC

REFURBISHMENT AND UPGRADE OF
COMPONENTS

ALLOY 825, 625, ALLPY C276, C22, 300 & 400
SERIES SS

FACILITY FROM 2" TO 36' MACHINING

STATE OF ART CNC MACHINING

CLAD STATIONS



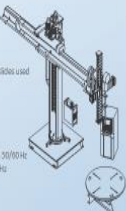


Red-D-Arc's Vertical Bore Cladding System perform fully-automated GTAW build up of metal components such as subsea chimeals. The VCS package is a complete turnkey a KEY 1250 PLC system controller with weld-data-documentation recording control pendant, a 300 or 700 amp a 130 amp HotWire TIG power source, horizontal cross slides mounted on a heavy a 15-ton capacity floor-mounted turntable drive and a secondary encoder for position system also includes an integrated wire torch with integrated wire-feed guide.



Weld Process	Shielded Metal Arc
Manipulator	Manual
Tumbletable	Manual
Standard Power	1000
Optional Power	1000
Maximum Height	100
Minimum Weld	1/8" (3.2 mm)
Water Cooled Tip	Optional
Welding Speed	100
Control	Manual
Control Function	Manual
Input Power R.D.	1000
Input Power Mill	1000
Input Power Mill	1000
Overall Height	100
Shipping Weight	1000

RDV4
 Rodata TV (HW-5TAW)
 RD40 RDV5 SD35 with heavy-duty motorized cross-axis
 6 front diameter table, 15 ton capacity with slipping
 Miller Maxstar 2070V Constate 3.1 cooler, Maxstar 200X
 Other power sources are available
 Up to 76.7 ft (2000 mm) depending on torch type and vertical axis load
 2.77 in (mm)
 Versatile and adjustable - amplification on torch type
 7.87 in/min (200 mm/min) (20 to 45 in/min)
 KEY 1250 PL Control
 Controllicity (3) in TFF/HMI or remote pendant
 V55 (control, manual, manual) - 380 to 480 V, 3 phase, 50/60 Hz
 Maxstar 700 and Maxstar 2000 - 380 to 480 V, 3 phase, 50/60 Hz
 Coolmate 3.5 - 125 VAC/50/60 Hz (from power source)
 1500 mm (in 1500 mm)
 21,654 kg (47,650 kg) complete system



MATERIAL SUPPLY

PROJECT SUPPLY

PIPE, FITTING, FLANGES, FLANGE PACKAGE

SEAMLESS AND WELDED PIPES

3D AND 5D BEND, Y PIECES

NICKEL ALLOY, TITANIUM, INCONEL SUPER
DUPLEX, DUPLES

VALVES AND FASTENERS

LEADING SUPPLIER IN AUSTRALIAN OIL AND GAS
INDUSTRY





PIPE WELDED AND SEAMLESS

Carbon, impact tested, high yield and chrome/moly, stainless steel, duplex, super duplex, special grades stainless, nickel alloys and titanium.

ANSI FLANGES

Carbon, impact tested, high yield, chrome/moly, stainless steel, duplex, super duplex, special grades stainless, nickel alloys and titanium.



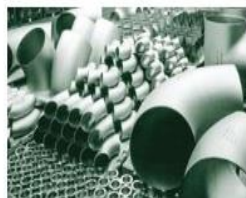
COMPACT FLANGES AND CLAMP CONNECTORS

Carbon, impact tested, high yield, stainless, duplex, super duplex, special grades stainless and titanium.



BOLTING

Austenitic stainless steels, special grades stainless, duplex, super duplex, nickel alloys and titanium.



ANSI BW FITTINGS WELDED AND SEAMLESS

Carbon, impact tested, high yield and chrome/moly, stainless steel, duplex, super duplex, special grades stainless, nickel alloys and titanium.



MONOFLANGES

Carbon, impact tested, high yield, stainless, duplex, super duplex, special grades stainless and titanium.



SPECIALITY ENGINEERED FORGED ITEMS

Carbon, impact tested, high yield, stainless steels, special grades stainless, nickel alloys and titanium.



VALVES

Ball Valves - API 6D, API 6A, ANSI B16.34, BS5331
Gate, Globe & Check Valves - Valves to ASME, BS and API standards.
Compact Modular Valves - Comply with ASME/API/BS standards.
Carbon Steel, Stainless Steel, 6Mo, Titanium, Duplex, Super Duplex, Inconel™, Incoloy™ and Special Alloys

™ INCO trade marks.

Valves

Ball Valves

Codes

API 6D, API 6A, ANSI B16.34, BS5331

Construction

- Trunnion mounted side and top entry and welded body
- Floating ball type

Services

Low to high temperatures from -196 to 400 deg C, metal to metal, cryogenic, crude oil, gas, sea water and sour, etc

Applications

Onshore, offshore, subsea, pipelines, manifolds, risers, ESDV, gas/oil transmission, treatment and distribution, metering stations, power generation, flowlines, drilling, exploration

Sizes

½ to 60 inch

Pressure Classes

ANSI 150 to 4500#
API 2000 to 15000#



End Connections

Flanged, butt weld, hubs

Materials of Construction

Carbon Steel, Stainless Steel, 6mo, Titanium, Duplex, Super Duplex, Inconel, Incoloy and Special Alloys

Bore

Full, reduced and venturi

Fire Safe

BS6755, API RP 6FA, API 607

Gate, Globe & Check Valves

Valves to ASME, ANSI, BS and API standards.

Materials in castings and forgings include Carbon, Steel, Stainless Steel, Duplex, Super Duplex and Special Alloys

Special Engineering Products

Special Products

- Sphere Tees
- Spherical Wye & Wyes
- Bull Head Tees
- Forged Tees (large dia)

Flow Tees

Lateral Fittings

Production Manifolds

Manifold Blocks

Girth Flanges

Tube Sheets

Channel Flanges

'Y' Standard & Piggable

Buckle Arrestors

Misalignment Flanges

Bulkheads

Anchor Flanges/Anchor Block

Compact Flange Connectors

Hubs

Clamps Connectors

Clad Pipe Metallurgical / Mechanical Bond

- General non-specific components requiring 'tailored' engineering and construction for a variety of project functions.



OFFSHORE ASSEST MANAGEMENT

NDT EQUIPMENTS

DRILL COLLAR, HWDP

BOP, CHOKE MANIFOLDS

ELASTOMERS

MUD PUMP

BEARING 2"-TO 100"

FISHING AND DOWN HOLE TOOLS

SHALE SHANKER

EX MOTOR

SOLID CONTROL

JACKING PARTS, FEED PUMP HANDLING TOOL





ACOUSTIC WALL PANELS

SLIDING FOLDING DOOR

AUTOMATICS/IRON MONGERY

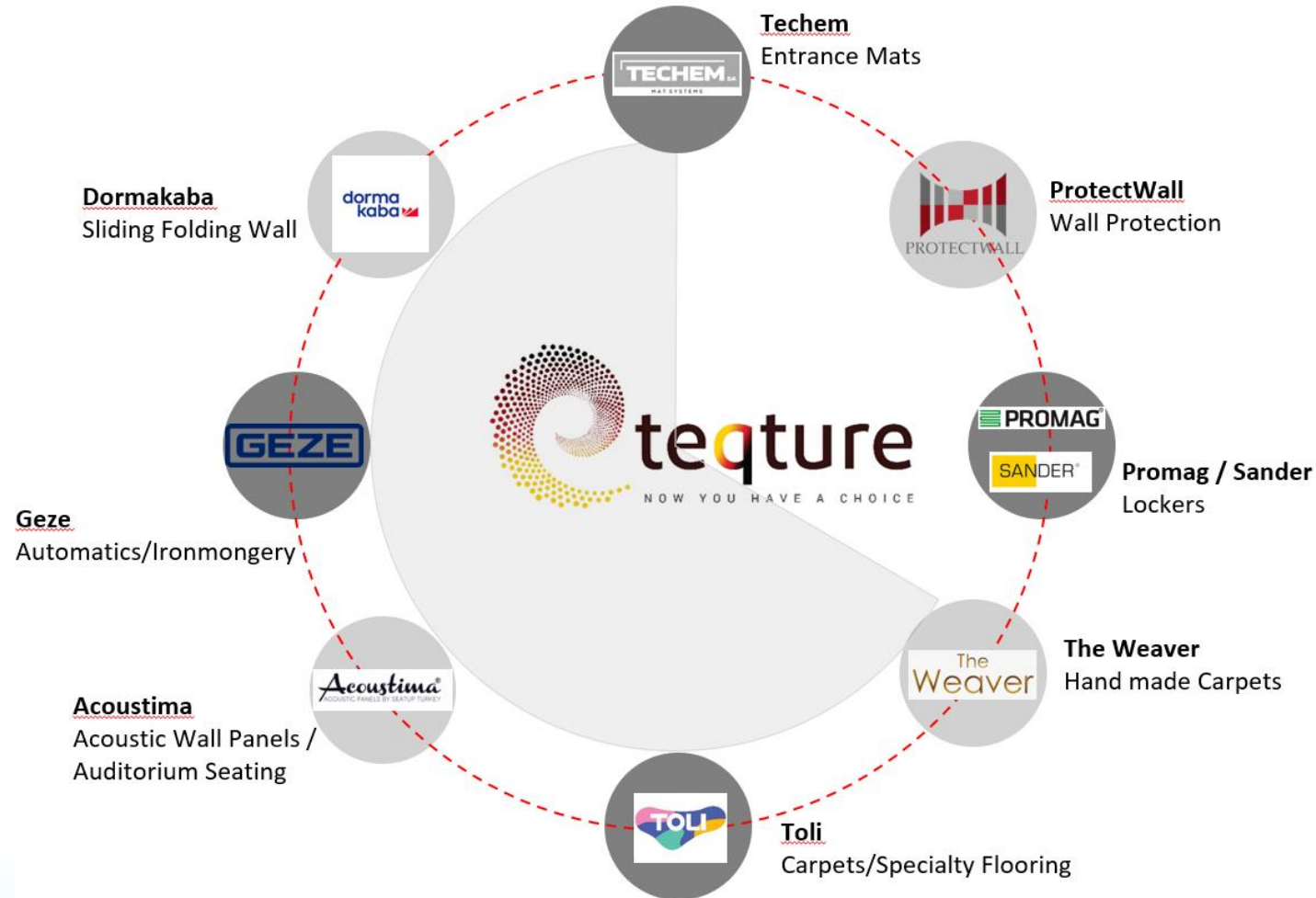
WALL PROTECTION

CARPET/SPECIALITY FLOORING

HAND WOVEN CARPETS/RUGS

LOCKERS

ENTRANCE MATS



THANK YOU